

The image features a central dark gray horizontal band containing the text. Above and below this band are light gray areas with wavy, curved lines that create a sense of motion or a stylized background.

ASEAN AWARD

NET FOUNDATION THAILAND





ASEAN AWARD

The 32 years of works side by side with the deprived to develop the life quality of the people at all levels, without any preference, rendered the NET FOUNDATION being selected for the ASEAN AWARD on The ASEAN Leadership Award on Rural Development and Poverty Eradication in 2013, This Award was first bestowed to Non-government organization and socio-civil development organization in the 8th conference of ASEAN ministers on rural development at Yogyakarta, Indonesia on July 5,2013

มูลนิธิพัฒนาอีสาน (NET FOUNDATION)

1. Organization: THE NET FOUNDATION

2. Address: 100/1 km.14, Surin-Sangkha Road, Ta Ong Subdistrict, Mueang District, Surin 32000, Thailand. Tel. 044-558752 Fax. 044-558753 E-mail: netsurin@hotmail.com www.netsurin.org

3. History:

The NET Foundation is a Non-Governmental Organization (NGO) that focuses on rural community development in the north-east of Thailand. In 1981, the founding members first initiated a small integrated rural development operation on the border of Thailand with Cambodia in the Thai province of Surin. The project was called “**Toward Self-Reliance in Northeast Thailand: Integrated Village Development along the Thai-Kampuchean Border of Surin Province-NET**”. The project covered 52 villages, lasted from 1981 until 1988, and was supported by the Canadian International Development Agency (CIDA).

Towards the end of the project in 1986, many people involved in the project agreed that what they had learned was valuable and transferrable. They therefore decided to establish the NET Foundation in Surin Province on 19 November 1986. Today, the Foundation is registered as the 657th organization on the Ministry of Finance's list of domestic charitable foundations.



Founding Committee of the Net Foundation

The experience gained from the original project, with continuing support from CIDA, paved the way for many other projects initiated by the NET Foundation in the region between 1988 and 1993, including the Participatory Community Development project. In the meantime, the Foundation expanded its operational coverage from 52 to 80 villages.

As the nature of the problems changed, the NET Foundation in 1994 adapted its objectives and expanded its responsibilities into a wider range of development projects in both rural and urban areas. The move was supported and financed by many organizations, governmental, domestic, and international, along with private funding from the NET Foundation itself.

Today, the NET Foundation has expanded to different provinces across the north-east of Thailand with its headquarters still in Surin and operational offices in other provinces including Sisaket, Mukdahan, Ubon Ratchathani, Loei, Nakhon Phanom, Nong Khai, and Udon Thani.



4. Vision and Objectives

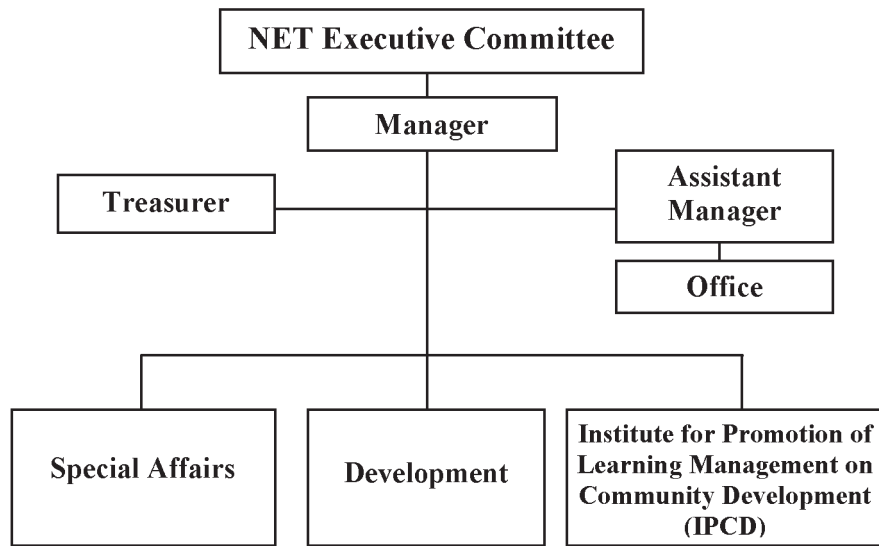
- **Vision**

The NET foundation is lead organization in learning process organizing to develop capacity of people and local development movement that enhancing the significant role in community's right protection and establish social justice.

• **Objectives**

1. Provide transformative learning to improve the quality of life of the people.
2. Implement community development through a learning process.
3. Provide coordination for other local development foundations.
4. Cooperate with other charitable foundations.
5. Initiate cooperation between relevant domestic and international organizations.
6. Provide support for people organization and community development
7. Initiate programmes to protect and preserve natural resources and energy management.

5. Foundation Structure



1) Special Affairs: The function of this division is to link domestic and international development projects under one roof and coordinate work in finding natural and financial resources. This branch also conducts public relations for the Foundation.

2) Development: This division is responsible for energy and natural conservation research, and is also responsible for development of programmes in the prevention of HIV, health care and other work in strengthening the community and networks.

3) Institute for Promotion of Learning Management on Community Development - (IPCD): This division is in charge of training new recruits and rural community members. Another responsibility is to evaluate the performance of other divisions and provide counselling for HIV-positive patients.

4) Treasurer: Responsible for the foundation's finances and accounts.

5) Office: The Office handles the day-to-day administration, finding locations, acquisition of durable goods and transportation.

The Foundation has also constructed a learning centre which provides a site for educational fairs, training programmes, and special seminars for communities under the care of the NET foundation. At present, the learning centre is also registered as a business enterprise with the purpose of raising funds for the Foundation and future projects.

• **NET Executive Committee:**

o Executive Consultants:

- Assoc. Prof. Chom Phoomiphak
(Former Vice President for Administration, Srinakharinwirot University)
- Mr. Issara Jaranyanon
(Former Deputy Director of the Department of Education)
- Mr. Thongin Jitdee
(Former Director of the Centre for Non-Formal Education)
- Mrs. Plangsri Moonlasart
(Former Director of Sirinthon School / Former President of Surin Province Red Cross)
- Mr Arthon Prempirak
(Former Director of the University of Technology)
- Assoc. Prof. Wisetsak Khotarsa
(Former Teacher, Rajabhat University, Surin)

o Current Executive Committee:

- | | |
|---|----------------|
| • Assoc. Prof. Parichart Valaisathien
(Department of Community Development, Faculty of Social
Administration . Thammasat University) | President |
| • Mr. Thongchai Techaweeraphong
(Former NET Foundation Manager / Businessperson) | Vice President |
| • Mrs Ladawan Arayaphong
(Businessperson) | Treasurer |
| • Assoc. Prof. Dr. Sunthorn Kohtbuntou
(Former Professor, Srinakharinwirot University /former Advisor,
Ministry of Education, Lao PDR.) | Secretary |
| • Assist. Prof. Chompon Surintraboon
(Former Professor, Faculty of Architecture, Chulalongkorn University) | Committee |
| • Second Lieutenant Pusit Singkanipha
(Lawyer) | Committee |
| • Mr. Surat Koonwatthanapong
(Businessperson) | Committee |
| • Mr. Kasemsak Sanephod
(Former Governor of Surin Province) | Committee |

- Dr. Norasate Phisitpanporn Committee
(Professor, Research Institute for Languages and Cultures of Asia,
Mahidol University)
- Professor Sayan Prichanjit Committee
(Department of Community Development, Faculty of Social
Administration, Thammasat University)
- Mr. Sun Moonlasart Committee
(Vice President, C.P. Land PCL.)
- Mrs. Somjit Thanwutthigul Committee
(Businessperson)

There are 35 employees working for the Foundation and another 19 staff at the leaning centre which bring the total to 54 lives currently employed under the NET Foundation banner.

6. The Progress of the NET Foundation

1978 – 1981

- The Canadian volunteer-sending agency CUSO and other NGOs working on the Thai-Cambodian begin work at a refugee camp in Kap Choeng

1981 – 1987

- Implementation of the integrated rural development project “**Toward Self-Reliance in Northeast Thailand: Integrated Village Development along Thai-Kampuchean Border of Surin Province**” in 52 villages under three districts in Thai province of Surin along the Cambodian border.

1986 – Registered as the NET Foundation in Surin Province

1988 – 1993

- Beginning of the Participatory Community Development (PCD) project.
- Expansion of the Foundation’s operations to 47 more villages and the expansion of the Foundation network with three other local development organizations.
- Creation of a committee controlled by local representatives and respected personnel in charge of revolving funds for rural community development
- Expansion of the Foundation’s operations to 80 villages in 8 districts (Kap Choeng, Buachet, Sangkha, Mueang, Sanom, Lamduan, Sikhorphum and Chom Phra

1993 – 1998

- Formation of the training and learning centre for rural development projects in Thailand, Cambodia and Laos
- Expansion of development projects to urban areas in the provinces of Surin, Buriram, and Sisaket

- Beginning of cultural and education development work and the creation of a revolving fund to enhance the living standards of local artists
- Enhancement of local businesses through the formation of integrated colour mills and cooperative natural dye stores
- Implementation of projects to enhance gender cooperation in the management of natural resources

1998 – 2002

- Support for local organization networks including labour unions to enhance the creation of a learning community and an annual development report along with the maintenance of the Foundation's revolving funds
- Strengthening of the relationship between the local people and the government sector through integrated training and local energy plans in order to improve community development programmes and resource conservation
- Coordination of energy and environmental conservation projects and construction of an office for sustainable energy research.
- Coordination of a project for the development of rural industry in Surin and Sisaket Provinces.

2002 – 2007

- The transformation of the NET Foundation into a foundation with the ability to provide consultation and training of volunteers for other development projects in Laos and Cambodia
- Transfer of energy and environmental conservation work to local administration bodies and the extension of Foundation ideas and experience beyond its traditional area
- Transformation of the Foundation into a learning and training centre for NGOs, governmental agencies, and citizens
- Continuing support for energy management: U Lok was the pioneer subdistrict for implementation of an energy conservation project
- Energy issues raised by the Foundation were included as one of the six natural resource conservation strategies in the Sustainable Energy Strategy policy of Surin Province

2008 – Present

- The Foundation has expanded its operations into eight provinces across the northeast and into the neighbouring countries of Laos and Cambodia which have been incorporated into a network contributing to various developmental issues in the region

Thailand

- Strengthen community self-management of natural resources and the environment. Support and promote community forest conservation as a basis for sustainable living.
- Initiate food and energy security schemes as well as organic farming and marketing.
- Provide a user-friendly educational service to promote safe sex in local communities and prevent AIDS and other sexually transmitted diseases
- Promote HIV prevention projects by creating and supporting local networks that can reach into the most isolated parts of society
- Cooperate with educational institutions on participatory monitoring and evaluation for development projects.

Laos

- NET Foundation concerns in Laos can be separated into two major sections;
 - Provide training and consultation to private and governmental development projects in Lao PDR.
 - Enhance cooperation between the NET Foundation, Alliance Anti Traffic (AAT), Lao Women's Union (LWC) and Social Development Alliance Association (SODA) organization in preventing human trafficking and advise on how to build up a network of developmental projects within Lao society. This project requires support from many agencies such as the National University of Laos, various NGOs, 30 government officers from the Lao Women's Union and the Lao government that have been officially trained by the NET Foundation. The Foundation also set a goal for collaboration between SODA, AAT and the NET Foundation to eradicate human trafficking,

strengthening the role of women and children in society, improved training and other academic functions in Vientiane, Savannakhet and Champasak

Cambodia

- The NET Foundation aims to promote the bilateral relationship between Thailand and Cambodia by reinforcing cooperation among various development agencies such as charitable organizations in order to exchange information

- Cooperation among independent organizations of the two countries began in Odorn Meanchay Province of Cambodia on 21-22 July 2012 with the participation of representatives from various NGOs and Christian and Buddhist organizations from Phnom Penh, Kampong Speu, Battambang, Banteay Meanchay, Koh Kong, and Oddar Meanchay. This initiative also coordinated seminars conducted by Mahidol University to exchange information and an official training program between the NET Foundation and its Cambodian counterpart.

7. Important achievements that inform the current Foundation.

7.1 Toward Self-Reliance in Northeast Thailand: Integrated Village Development along the Thai-Kampuchean Border of Surin Province-NET

The development of NET Foundation was inspired by a community development project (1981-1987) on the Thai-Cambodian border which was funded by CIDA. The aim was for government agencies, non-governmental organizations (NGOs) and educational institutions to cooperate in improving the living conditions of the impoverished, using the principle of

“self-reliance”. It is also known as one of the first rural development projects that combined various stakeholders. The objectives of the project were:

1) To initiate a primary healthcare programme and primary and adult education, to improve agricultural production, and to support occupational activities.

2) To reinforce villagers’ participation in planning, designing, prioritizing and implementing projects.

3) To reinforce an appropriate model and structure of cooperation among the government sector, private sector and villagers.

4) To give NGOs in Thailand more experience in self-reliant projects and support the use of local products to maximize gains.



The project was implemented in 52 villages in Kap Choeng, Buachet and Sangkhla districts. By assigning one worker per village, villagers' living conditions were improved in every aspect: healthcare; occupation, especially integrated farming and livestock; handicrafts; saving groups; village welfare; local trading; rice banks; fertilizer banks; and revolving funds to support family finances. The project also created development workers in rural development.



7.2 Participatory Community Development Project-PCD

Also funded by CIDA, this project (1988-1993) aimed to improve the well-being of villagers in Surin province. The project emphasized the long-term goal of self-reliance by encouraging the establishment of community organizations and village networks, supporting occupational activities, training for women and improving healthcare. The project covered in 47 villages in Buachet, Sangkha, Sanom, Sikhorphom, Chom Phra and Lamduan districts and farmers' networks in Salakdai, Trasaeng and Tang Chai subdistricts, Mueang District, Surin Province.

Implementation strengthened community organizations and expanded the operational area. In some areas, group management was robust. Village funds helped provide welfare for the impoverished. In other areas, collective farming began. This helped allocate resources to the impoverished. In some cases, saving groups developed into saving cooperatives which increased the benefits for villagers.





The experience of these two projects helped the Foundation develop patterns and practices for rural development workers in order to produce local leaders to improve their own communities, promote participation and build a tradition of bottom-up development.

7.3 Newly initiated projects in HIV prevention, energy, and natural resource and environmental conservation.

NET continually analysed the changing circumstances affecting people and communities and found that health, especially HIV issue and the consequent discrimination was the major problem. NET therefore launched a project to promote understanding of HIV, created more channels for healthcare services and also worked to change public attitudes about people living with HIV.



Energy is becoming more costly each day. The effects of excessive energy consumption which leads to global warming led NET to take up the energy issue. The project aimed to build understanding of energy, support alternative energy and plan community energy use. The project successfully coordinated with a sustainable energy project of the Appropriate Technology Association. This has become a model for community planning nationwide.



NET also recognized the importance of resources such as soil, water and forests. The Foundation aims to restore and conserve resources, maintain community forests, rehabilitate soil and manage water resources.



8. The fourth decade: building social justice

With its 30 years' experience, NET still focuses on rural development for the impoverished and disadvantaged in order to create a fair society. Our mission is to reinforce the ability of civil society and networks to promote self-reliance at both individual and local levels. The Foundation promotes participatory, bottom-up development, respect for human dignity and gender, access to resources and community rights by cooperating with the government and private sector, and both domestic and international civil society.

8.1 Strengthen community self-reliance.

NET recognizes the important role of globalization today. If communities do not have sufficient immunity, they may be trapped by propaganda and money-oriented trends. Thus, NET has worked with communities in the following ways.

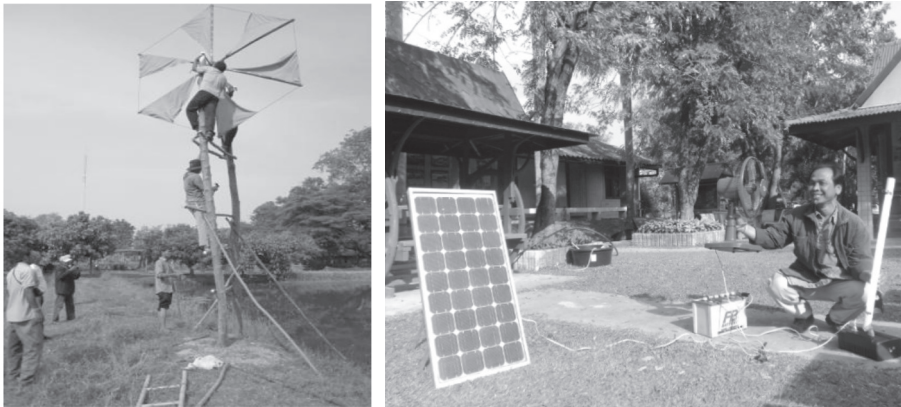
Occupations. NET focuses on consolidating food security and generating family income by promoting basic occupations, especially agriculture, livestock, and handicrafts for both domestic and commercial purposes. The project also cooperated with the “Green markets”, where farmers sell organic produce, such as the Green market in Naeng Mut Subdistrict, Kap Choeng District, Surin Province.

Activities for Establishing Occupations



Natural resource conservation and rehabilitation. Soil, water, forests and energy are associated with the four basic needs of Buddhism (food, clothing, medicine and shelter). The Foundation aims to promote community forest conservation programmes and programmes to end the use of chemical fertilizers and pesticides. It also emphasizes the importance of soil and water

quality conservation. Villagers are encouraged to establish conservation rules especially regarding urban growth which requires high energy consumption. NETs role is to educate people about energy saving, energy management and alternative energy sources such as biogas, wind turbines for pumping, and efficient charcoal burning.



Natural resource conservation and rehabilitation

Village welfare. Village self-reliance is the key. In addition to consolidating food security, basic needs, well-being and natural resource abundance, it is important to set up village welfare and savings programmes through village saving groups which eventually become co-operatives. These activities can help create better life security, healthcare benefits and revolving funds for local investment. It is proven that today villages are capable of managing their own organizations such as the Credit Union Co-Operative in Trasaeng Subdistrict, Mueang District, Surin Province.

8.2 Reduce discrimination and promote respect for human dignity.

The Foundation realizes that every human being, regardless of sex, race and occupation, is equally valued. The Foundation seeks to alleviate alienation of and discrimination towards various target groups, particularly children, adolescents, women, people living with HIV, sex workers and third gender groups by education that makes the target group feeling of self-worth while being able to access public services. NET also created public understanding to lessen discrimination through cooperation among marginalized groups, public campaigns and job opportunities as both volunteers and staff. NET also works in cooperation with the Alliance Anti Traffic (AAT), Lao Women's Union (LWC) and Social Development Alliance Association (SODA) on the large-scale human trafficking across borders of Thailand, Lao and Cambodia.



8.3 Recognize community rights.

Recognizing that the community is the root of culture and way of life, NET stresses education about community rights through participation to counter the health and environmental effects, especially the problems of dust and water pollution resulting from the construction biomass and solid waste incineration power plants. This campaign resulted in awareness of both human and community rights which led to an agreed solution with the government and entrepreneur.



8.4 Reinforce learning.

The learning process should be lifetime. From its 30years' experience of rural development, NET has amassed a lot of useful know-how and designed courses in cooperation with government agencies, domestic and international training NGOs and consulting services. NET and its affiliated agencies also offer courses for developing trainers and learning process managers in order to develop long-term learning outcomes. Since 1994, more than 10,000 people have been trained by NET.



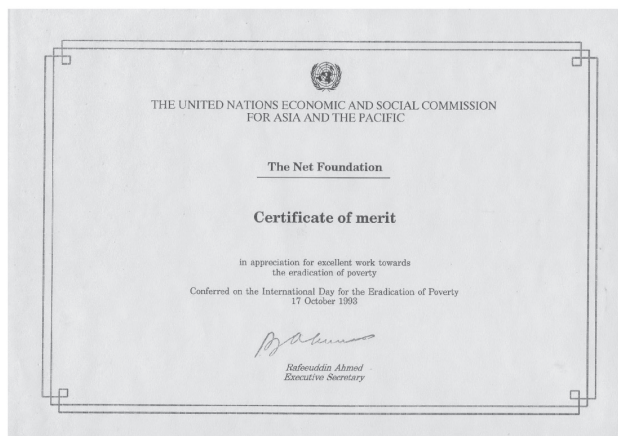
5) Create cooperative networks.

As a result of projects by the government and private sectors, NET has seen the importance of alliances. Local institutions and networks between sectors are necessary. The Foundation has strengthened the capacity of villagers through networks such as the Sustainable Energy Network in Surin province, and networks of victims of power plants and people living with HIV. NET has also sought support from government, the private sector, the media and academics.

The training mission is to improve the potential of the impoverished and victims, so that they enjoy greater well-being and live a life of dignity through reform of themselves and society in order to create a fair society.

9. Previous achievements

No.	Achievements/Awards	Award from	Year
1.	Outstanding NGO for Non-Formal Education Activities	Ministry of Education	1989
2.	Certificate of Merit	United Nations	1993
3.	Selection as a case study for evaluating the progress of CUSO in planning and implementing the NET1 project and developing the NET2 project (PCD), analyzing Partnership, Institution-Building and Sustainability.	CUSO (Canada)	1993
4.	Outstanding Foundation for the Fifth Region, First Runner-up at the Fifth Region Conference of the League of Foundations of Thailand, under the Royal Patronage of H.M. the King with the support of the Ministry of Interior	League of Foundations of Thailand, under the Royal Patronage of H.M. the King.	2002
5.	Certificate from the European Union for Social Support Project (SSP).	Bank for Agriculture and Agricultural Co-operatives / Delegation of the EU to Thailand	2005
6.	80-village Energy Network under H.M. the King's "Sufficiency Economy".	Ministry of Energy	2007
7.	Outstanding Organization for Social Campaign	National Council on Social Welfare of Thailand, under the Royal Patronage of H.M. the King.	2011
8.	Outstanding Foundation for the Fifth Region 2012	League of Foundations of Thailand, under the Royal Patronage of H.M. the King.	2012
9.	The ASEAN Leadership Award on Rural Development and Poverty Eradication	ASEAN Ministers Meeting on Rural Development and Poverty Eradication – 8 th AMRDPE	2013



Certificate of Merit



Certificate from the European Union for Social Support Project (SSP)



80-village Energy Network under H.M. the King's
“Sufficiency Economy” 2007



Awarded for Outstanding Organization for Social Campaign 2011



Awarded for Outstanding Foundation for the Fifth Region 2012



The ASEAN Leadership Award on Rural Development and Poverty Eradication